

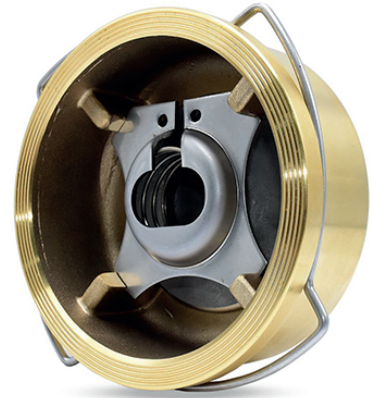
# Varnasan

CONTROL VALVE TECHNOLOGIES

## DISCO CHECK VALVE

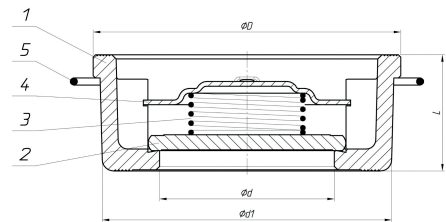
### Dimension

Nominal Pressure	16 Bar									
Nominal Diameter	DN	15	20	25	32	40	50	65	80	100
Valve Dimension	Qd	15	20	25	31	39	48	63	75	88
	L	16	20	22	28	32	40	46	50	60
	QD	40	47	56	72	82	95	115	132	155
	Qd1	35	43	50	66	77	89	106	124	145
Weight	Kg.	0.100	0.150	0.200	0.450	0.600	1.000	1.350	2.000	3.000



### Material Specifications

No	Part Name	Material
1	Body	CuZn40Pb2 - CW617N - Pirinç
2	Disc	X5CrNi18 10 - AISI304 Paslanmaz Çelik
3	Spring	X12CrNi18 8 - AISI302 Paslanmaz Çelik
4	Disc Guide	X5CrNi18 10 - AISI304 Paslanmaz Çelik
5	Mounting Spring	X12CrNi18 8 - AISI302 Paslanmaz Çelik



### Min. Opening Pressure (mBar)

Disc Type Check Valve											
Nominal Diameter	DN	15	20	25	32	40	50	65	80	100	
Flow Direction	With Spring	↔	21								
		↓	17	18.3	16.3	16.2	16.1	15	13.7	12.5	
	Without Spring	↑	23		24	25	26	26.5			
		↓	2.6	3.9	4	4.2	5.1	5.6	7.4		

